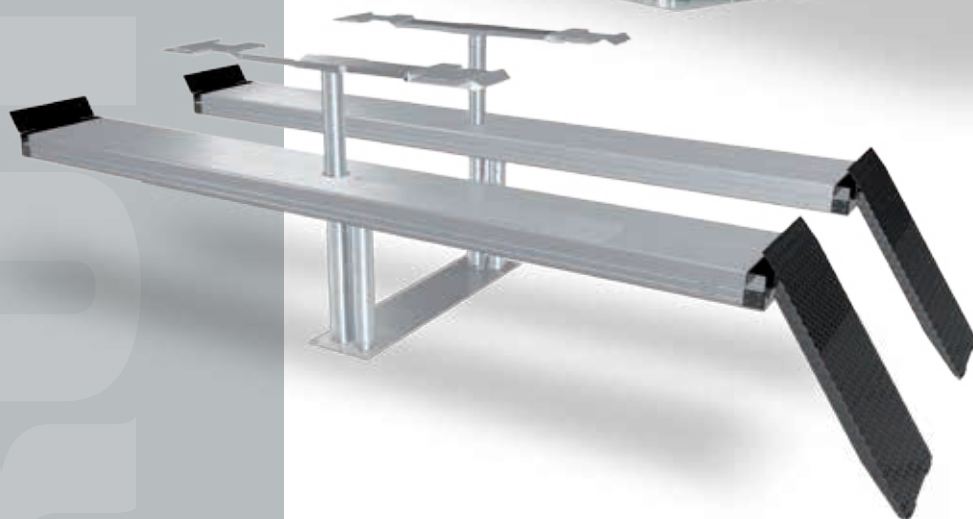


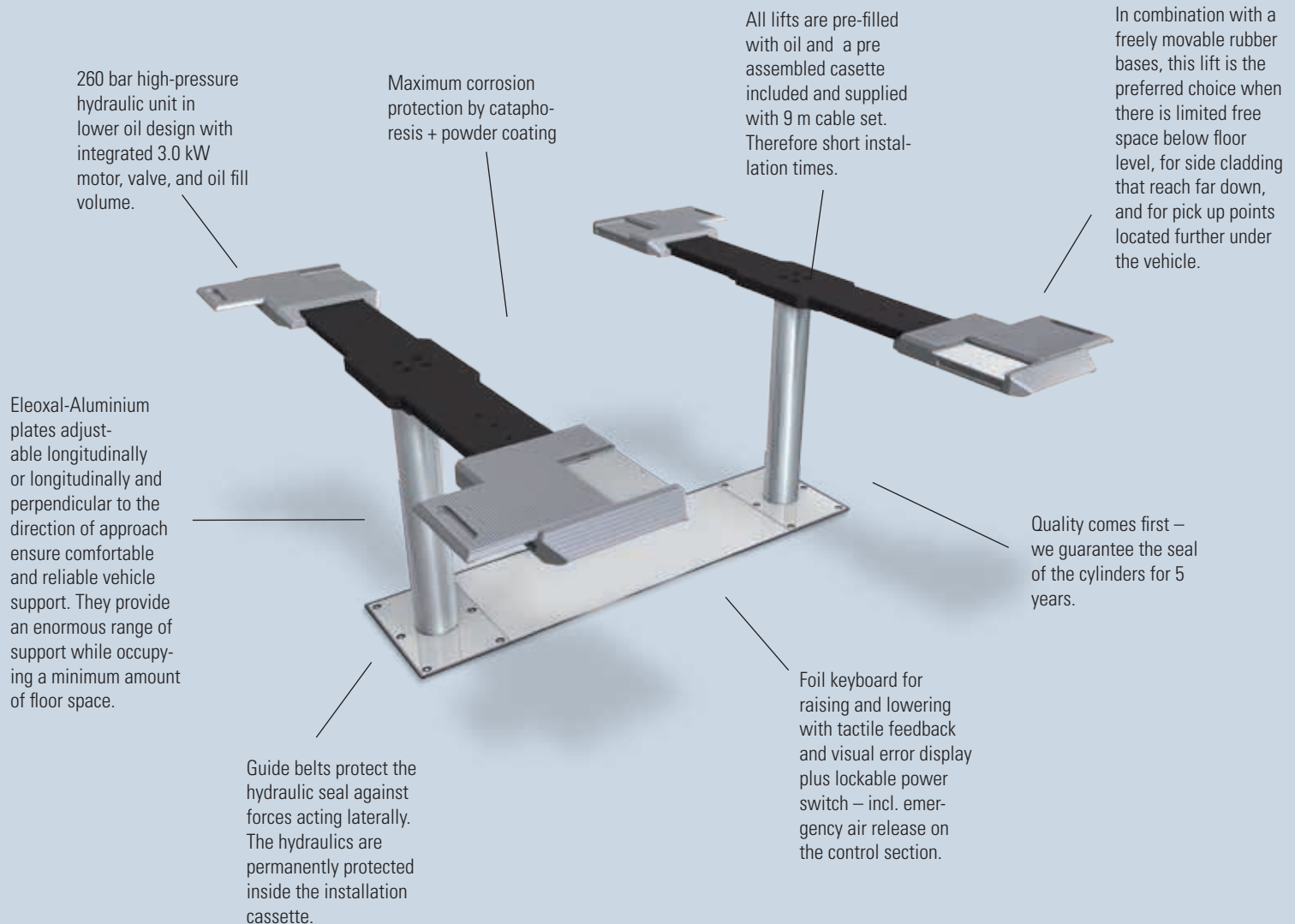
# INGROUND LIFTS

SL135/235/250/440/450



## SL235MP

INGROUND LIFTS WITH BALANCE PLATES ARE THE PERFECT SOLUTION FOR NORMAL REPAIR WORK. ABSOLUTE FREEDOM ALL AROUND AND UNHINDERED ACCESS TO ALL AREAS OF THE VEHICLE OFFER THE BEST WORKING CONDITIONS. THE MECHANIC DOES NOT HAVE TO CONTEND WITH ABOVE-GROUND RAMS OR SWIVEL ARMS REACHING UNDER FROM OUTSIDE.



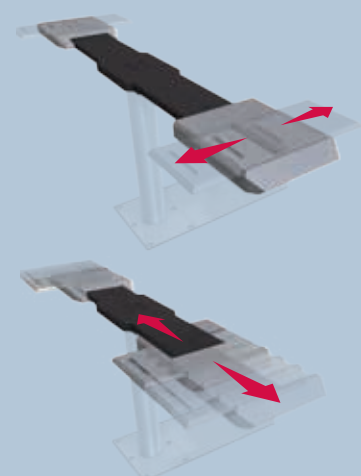
### INSTALLATION CASSETTE FOR INGROUND LIFT SL235MP



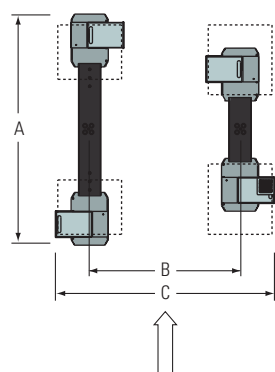
### MODELS

#### SL235MP

2-cylinder inground lift, longitudinally and transversely movable drive-over platforms, incl. 4 rubber bases 70 mm.



Model:	SL235MP XY support	SL235MP-MINI XY support	SL235MP-MAXI XY support
Capacity	3500 kg	3500 kg	3500 kg
Stroke	1920 mm	1920 mm	1920 mm
A. Overall length	1400-2051 mm	1120-1771 mm	1700-2351 mm
C. Overall width	1665-1945 mm	1665-1945 mm	1665-1945 mm
Drive over height	60 mm	60 mm	60 mm
Support range, longitude	890-2051 mm	890-2051 mm	890-2051 mm
Support range, transverse	770-1900 mm	770-1900 mm	770-1900 mm
Cylinder diameter	123 mm	123 mm	123 mm
B. Cylinder spacing	1335 mm	1335 mm	1335 mm
Installation depth	2338 mm	2338 mm	2338 mm
Motor performance	3,0 kW	3,0 kW	3,0 kW
Electrical connection (3 phases)	230/400 V, 50 Hz	230/400 V, 50 Hz	230/400 V, 50 Hz
Lifting time	40 sec.	40 sec.	40 sec.
Lowering time	40 sec.	40 sec.	40 sec.



SL235MP



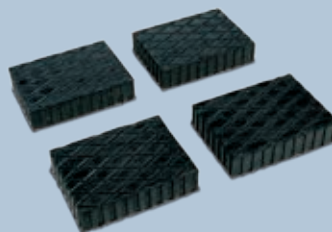
Detailed information see  
blitzrotary.com

## ACCESSORIES

Rubber bases pyramid 70 mm,  
4 pieces, Art.No. TOP11005

Rubber bases pyramid 1400 mm,  
4 pieces, Art.No. TOP11035

Rubber bases, 120 x 120 x 40 mm,  
4 pieces, Art.No. TOP11006



Rubber bases, 290 x 335 x 20 mm,  
4 pieces, Art.No. TOP11007

Recessed floor spotlights,  
Art.No. TOP12112

2nd control unit, Art.No. TOP12137



## SL235S3, SL235RA/SL250RA/SL460RA, SL235BR, SL250BR-RA

DUE TO THEIR NUMEROUS ADJUSTMENT OPTIONS, INGROUND LIFTS WITH SWIVEL ARMS ARE SUITABLE FOR NEARLY ALL REPAIR JOBS. COMPARED TO THE S2/S3 ENTRY-LEVEL MODELS, THE SWIVEL ARMS FOR THE RA MODELS ARE FASTENED ONTO A SLIDER, AND CAN THEREFORE BE MORE FINELY ADJUSTED. THE SPECIAL STRENGTHS OF THE BR MODELS ARE ESPECIALLY SUITABLE FOR BODYWORK.

260 bar high-pressure hydraulic unit in lower oil design with integrated 3.0 kW motor, valve, and oil fill volume.

3-fold extendable swivel arms cover the support ranges of small passenger cars and SUVs, up to small busses and vans.

All platforms included cassette are pre-filled with oil and supplied with 9 m cable set. Thereby short installation times.

In all RA models, the swivel arms are supported on the left and right on a swivel arm mover. Depending on requirements, they can be moved parallel to the longitudinal axis of the vehicle.

Maximum corrosion protection by cathodesis + powder coating

In BR models, the swivel arms grip under the vehicle from outside. Thus they not only leave the floor under the vehicle, but the entire rocker area is free as well. This can be useful in the case of difficult mechanical repair work.

Foil keyboard for raising and lowering with tactile feedback and visual error display plus lockable power switch – incl. emergency air release on the control section.

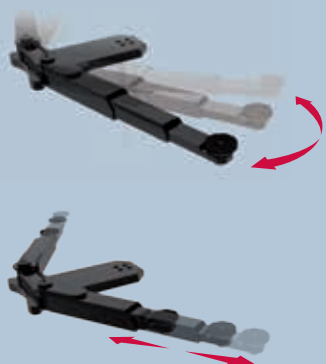
Guide belts protect the hydraulic seal against forces acting laterally. The hydraulics are permanently protected inside the installation cassette.

Quality comes first – we guarantee the seal of the cylinders for 5 years.

### MODELS

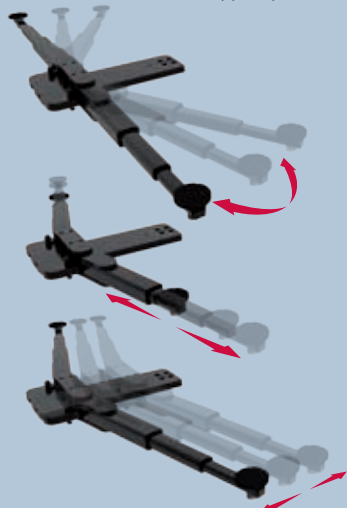
#### SL235S3

2-cylinder inground lift with bolted-on 3-part supporting arms, including support plates.



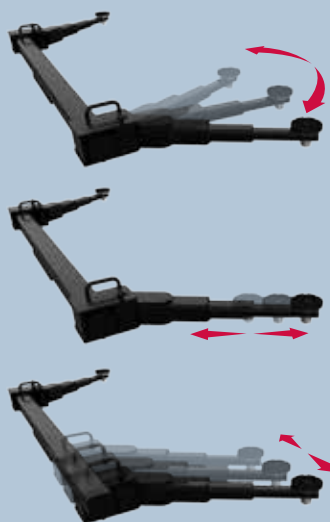
#### SL235RA/SL250RA

2-cylinder inground lift with 3-part supporting arms. Supporting arm holders can be moved perpendicularly to the driving direction, thus making it possible to support most popular vehicle models; incl. support plates.



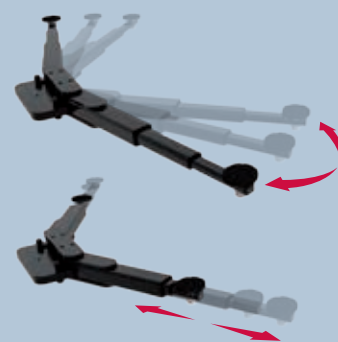
#### SL235BR

2-cylinder inground lift with 2-part supporting arms, specially designed for bodywork, incl. support plates.

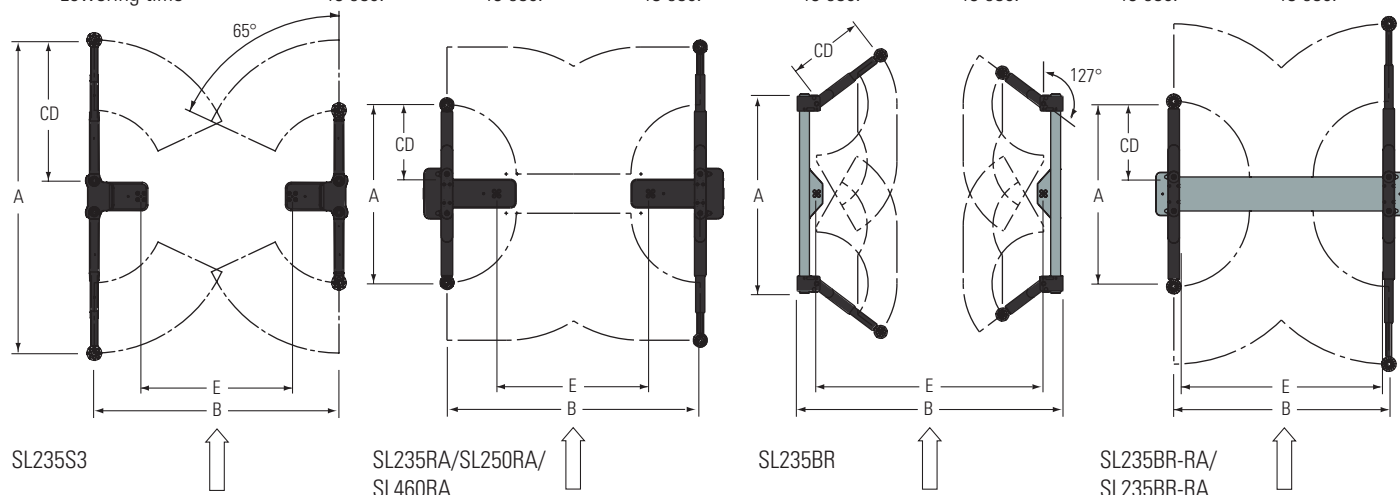


#### SL235BR-RA/SL250BR-RA

2-cylinder inground lift with 3-part supporting arms, including support plates.

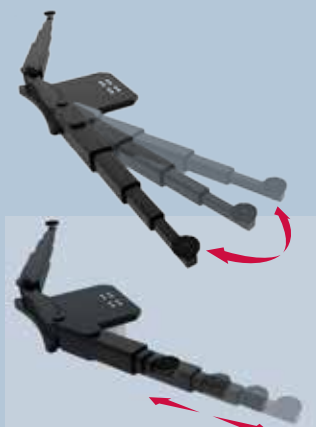


Model:	<b>SL235S3</b> supporting arms, 3-part	<b>SL235RA</b> supporting arms, 3-part transversely movable	<b>SL250RA</b> supporting arms, 3-part transversely movable	<b>SL460RA</b> supporting arms, 3-part	<b>SL235BR</b> supporting arms, 2-part longitudinally movable	<b>SL235BR-RA</b> supporting arms, 2-part	<b>SL250BR-RA</b> supporting arms, 3-part
Capacity	3500 kg	3500 kg	5000 kg	6000 kg	3500 kg	3500 kg	5000 kg
Stroke	1950 mm	1960 mm	1890 mm	1800 mm	1960 mm	1860 mm	1880 mm
A. Overall length	1670 mm	1540-2540 mm	1960-3600 mm	1960-3600 mm	2006 mm	1540-2540 mm	2230-3480 mm
B. Overall width	2420 mm	2390 mm	2810 mm	2420 mm	2771 mm	2255 mm	2275 mm
Rotary plate height min.	96,5 mm	93,5 mm	110 mm	141 mm	111,5 mm	97,5 mm	110 mm
Rotary plate height max.	150,5 mm	147,5 mm	164 mm	195 mm	165,5 mm	130,5 mm	164 mm
C. Supporting arm length min.	640 mm	600 mm	800 mm	745 mm	409 mm	600 mm	800 mm
D. Supporting arm length max.	1150 mm	1100 mm	1620 mm	1020 mm	744 mm	1100 mm	1620 mm
Cylinder diameter	123 mm	123 mm	123 mm	123 mm	123 mm	123 mm	123 mm
E. Cylinder spacing	1335 mm	1335 mm	1335 mm	1500 mm	2285 mm	2285 mm	2285 mm
Installation depth	2338 mm	2338 mm	2338 mm	2443 mm	2338 mm	2338 mm	2338 mm
Motor performance	3,0 kW	3,0 kW	3,0 kW	3,0 kW	3,0 kW	3,0 kW	3,0 kW
Electrical connection (3 phases)	230/400 V, 50 Hz	230/400 V, 50 Hz	230/400 V, 50 Hz	230/400 V, 50 Hz	230/400 V, 50 Hz	230/400 V, 50 Hz	230/400 V, 50 Hz
Lifting time	40 sec.	40 sec.	45 sec.	45 sec.	40 sec.	40 sec.	45 sec.
Lowering time	40 sec.	40 sec.	45 sec.	40 sec.	40 sec.	40 sec.	45 sec.



#### SL460RA

2-cylinder inground lift with 4-part supporting arms, including support plates, 3 times telescopic



Detailed information see  
[blitzrotary.com](http://blitzrotary.com)

#### ACCESSORIES

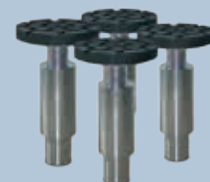
2nd control unit, Art.No. TOP12137



Adapter kit for sports car, 4 pieces, height 30-60 mm, Art.No. TOP11021



Adapter kit, 4 pieces, height 102-141 mm/ 128-198 mm/ 198-300 mm





## SL235DOP/SL235DOR-DP/SL235DOR-RA ALU TRACK

INGROUND LIFTS WITH DRIVE SURFACES ARE ESPECIALLY SUITABLE FOR DIRECT RECEIVING AND THE REPAIR AREA – AND, WITH OPTIONAL WHEEL ALIGNMENT KIT, ALSO FOR WHEEL ALIGNMENT. ALL MODELS CAN BE RETROFITTED WITH A JACKING BEAM. THE DP COMES STANDARD EQUIPPED WITH A JACKING BEAM BUILT INTO THE DRIVE SURFACE.

Dye cast aluminium balance plates (MP models only), adjustable longitudinally or longitudinally and perpendicular to the direction of approach ensure comfortable and reliable vehicle support. They provide an enormous range of support while occupying a minimum amount of floor space.

260 bar high-pressure hydraulic unit in lower oil design with integrated 3.0 kW motor, valve, and oil fill volume.

Quality comes first – we guarantee the seal of the cylinders for 5 years.

While lifting the track mounted at floor level, the optional automatic ground level compensation system closes the recess in the floor with 4 small after-stroke cylinders. This combines the advantages of installation at floor level (no drive over height) and the version resting on the floor (area under the vehicle is completely accessible without any difference in level).

Foil keyboard for raising and lowering with tactile feedback and visual error display plus lockable power switch – incl. emergency air release on the control section.

The ALU TRACK-drive rails are hot galvanised and/or powder-coated and are additionally fitted with an aluminium chequer sheet plating.

Short assembly times thanks to lift unit preassembled in the factory with 9 m long cable set.

Guide belts protect the hydraulic seal against forces acting laterally. The hydraulics are permanently protected inside the installation cassette.

### MODELS

#### SL235DOP/SL250DOP

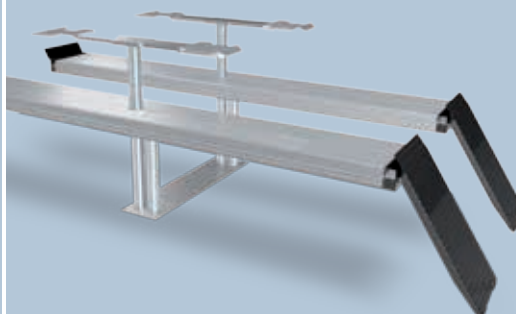
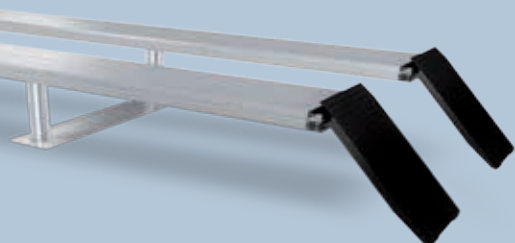
2-cylinder inground lift with ALU TRACK aluminium-plated (aluminium chequer sheet) tracks, on and off switch functionality for raising and lowering

#### SL235DOR-DP/SL250DOR-DP235

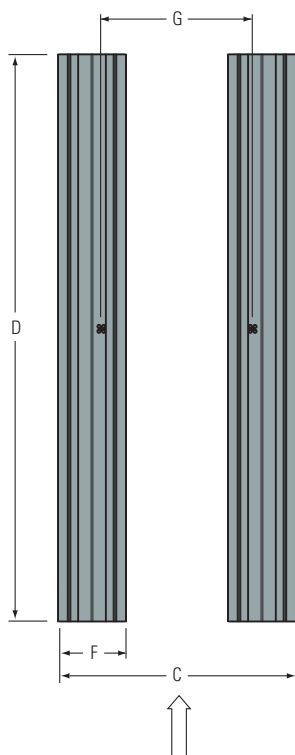
2-cylinder inground lift with additional support platforms (MP), with longitudinally and transversally movable aluminium supports, on and off switch functionality for raising and lowering

#### SL235DOR-RA/SL250DOR-RA250

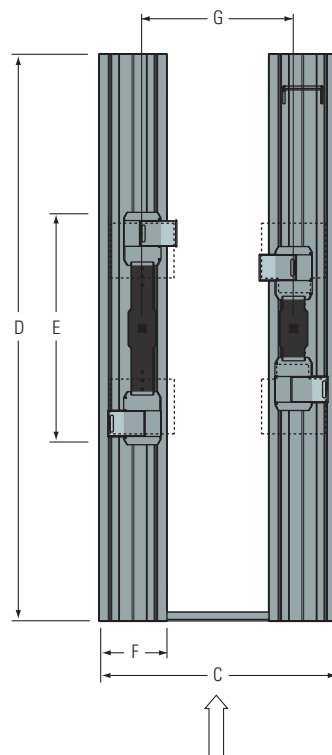
2-cylinder inground lift with on and off switch functionality for raising and lowering and 3-part supporting arms longitudinally and transversally to the driving direction moveable supporting arm holders (RA)



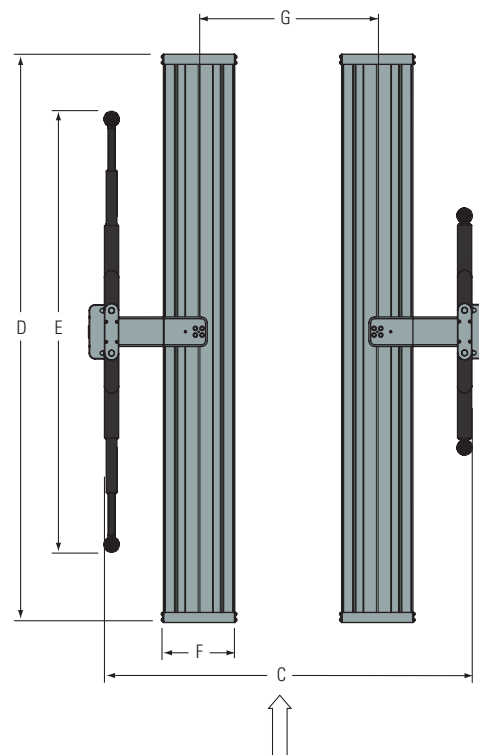
Model:	SL235DOP	SL250DOP	SL235DOR-DP XY support	SL250DOR-DP235 XY support	SL235DOR-RA supporting arms, 3-part	SL250DOR-RA250 supporting arms, 3-part
Capacity	3500 kg	5000 kg	3500 kg	5000 kg	3500 kg	5000 kg
Stroke	2020 mm	2020 mm	1860 mm	1860 mm	1860 mm	1860 mm
Stroke lifting table	-	-	2045 mm	2045 mm	2045 mm	2045 mm
Overall length with drive-on ramps	5820 mm	5820 mm	5820 mm	5820 mm	5820 mm	5820 mm
C. Overall width	2134 mm	2184 mm	2134 mm	2134 mm	2555 mm	2555 mm
Closed height	175 mm	175 mm	175 mm	175 mm	175 mm	175 mm
D. Platform length	4400 mm	4800 mm	4400 mm	4800 mm	4400 mm	4800 mm
E. Platform length of lifting table	-	-	1400-2051 mm	1400-2051 mm	1540-2540 mm	1540-2540 mm
F. Platform width	600 mm	600 mm	600 mm	600 mm	600 mm	600 mm
Support range, wheel free, longitudinal	-	-	890-2051 mm	890-2051 mm	-	-
Support range, wheel free, transverse	-	-	770-1900 mm	770-1900 mm	-	-
Supporting arm length min.	-	-	-	-	600 mm	800 mm
Supporting arm length max.	-	-	-	-	1100 mm	1680 mm
Cylinder diameter	123 mm	123 mm	123 mm	123 mm	123 mm	123 mm
G. Cylinder spacing	1500 mm	1500 mm	1500 mm	1500 mm	1500 mm	1500 mm
Installation depth	2443 mm	2443 mm	2443 mm	2443 mm	2443 mm	2443 mm
Motor performance	3,0 kW	3,0 kW	3,0 kW	3,0 kW	3,0 kW	3,0 kW
Electrical connection (3 phases)	230/400 V, 50 Hz	230/400 V, 50 Hz	230/400 V, 50 Hz	230/400 V, 50 Hz	230/400 V, 50 Hz	230/400 V, 50 Hz
Lifting time	40 sec.	40 sec.	40 sec.	40 sec.	40 sec.	40 sec.
Lowering time	40 sec.	40 sec.	40 sec.	40 sec.	40 sec.	40 sec.



SL235DOP/SL250DOP



SL235DOR-DP/SL250DOR-DP235



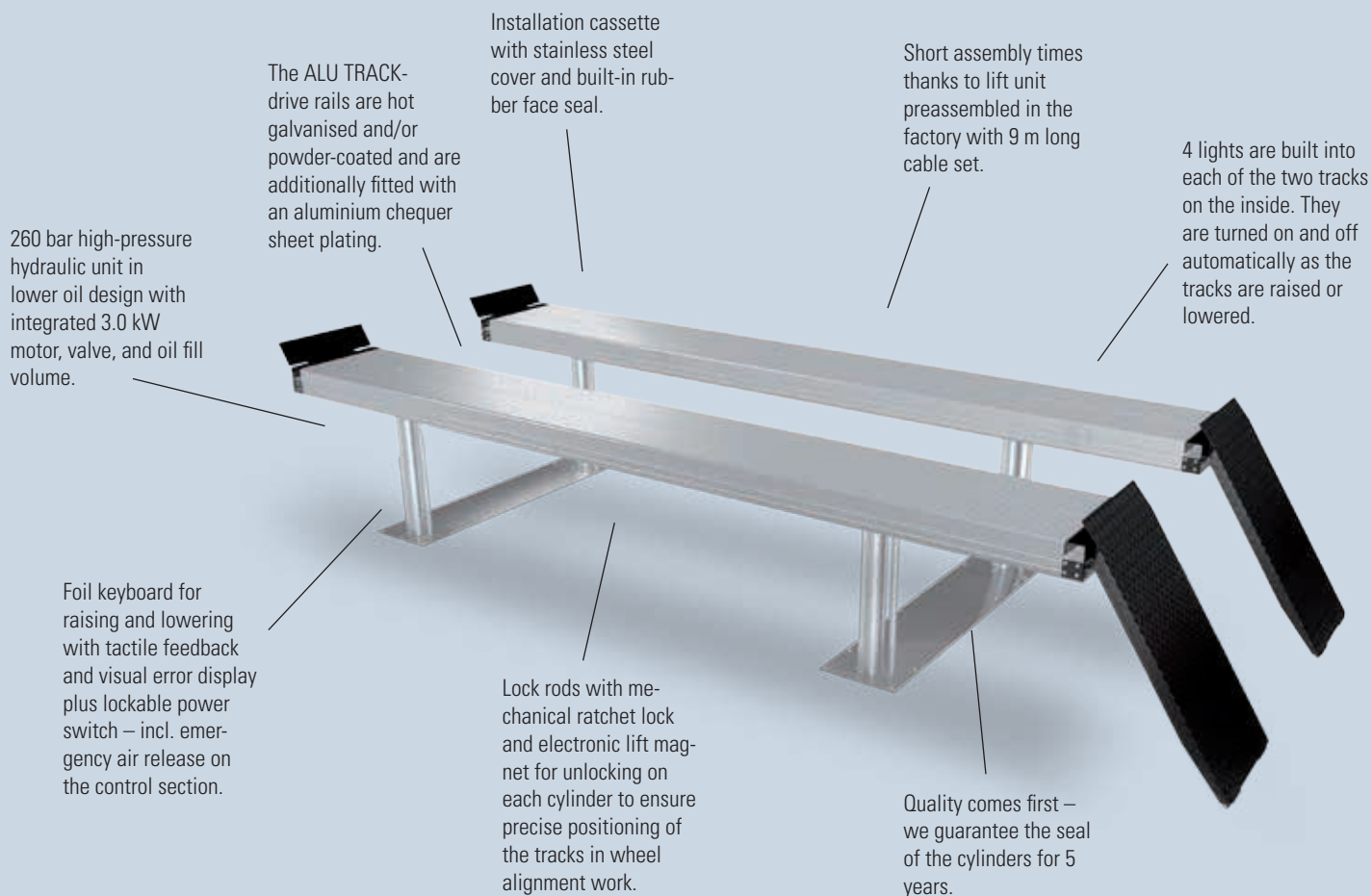
SL235DOR-RA/SL250DOR-RA250

## ACCESSORIES

see page 9

## SL440DOP/SL450DOP

THE SL450DOP IS A NEW VERSION FURTHER EXTENDING THE WIDE RANGE OF USES FOR THE INGROUND LIFTING SYSTEM. 4 LIFTING UNITS USED TOGETHER WITH LOCK RODS MAKE IT POSSIBLE TO USE AS A WHEEL ALIGNMENT LIFT. OF COURSE THERE IS ALSO NO REASON NOT TO USE THE LIFT FOR DIRECT RECEIVING OR REPAIRS AS WELL.



### MODELS

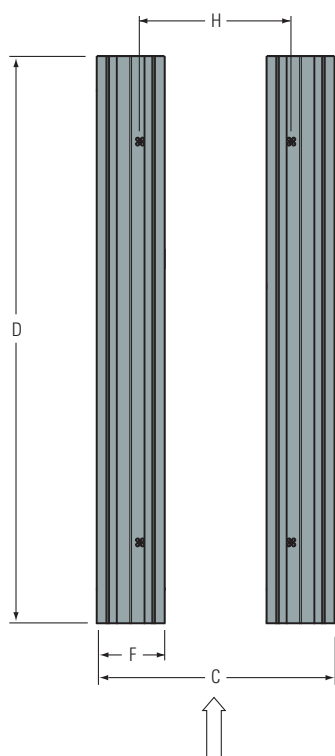
#### SL440DOP/SL450DOP

4-cylinder inground lift with ALU TRACK tracks, integrated lock rods and mechanical ratchet lock, on and off switch functionality for raising and lowering





Model:	SL440DOP	SL450DOP
Capacity	4000 kg	5000 kg
Stroke	2020 mm	2020 mm
Overall length with drive-on ramps (short/long)	5585/6860 mm	5585/6860 mm
C. Overall width	2100 mm	2100 mm
Closed height	175 mm	175 mm
D. Platform length	5500 mm	5500 mm
F. Platform width	600 mm	600 mm
Cylinder diameter	123 mm	123 mm
H. Cylinder spacing, transverse direction	1500 mm	1500 mm
Installation depth	2498 mm	2498 mm
Motor performance	2 x 3,0 kW	2 x 3,0 kW
Electrical connection (3 phases)	230/400 V, 50 Hz	230/400 V, 50 Hz
Lifting time	40 sec.	40 sec.
Lowering time	40 sec.	40 sec.



SL440DOP/SL450DOP



Detailed information see  
blitzrotary.com

## ACCESSORIES

Drive-on flaps short for installation at floor level, Art.No. TOP12121

Drive-on flaps long for installation resting on the floor, 1250 mm, suspended, excavation bevel 7°, Art.No. TOP12122

Limit on driving, Art.No. TOP12129

Cross brace for installation at floor level (except SL440), Art.No. TOP12123

Jacking beam, 2000 kg, pneumatically including rails, Art.No. TOP12149, Jacking beam, 2500 kg, pneumatically including rails, Art.No. TOP12150

Track set including fixings, Art.No. TOP12151

Wheel alignment supports (except SL440), 1350 mm, Art.No. TOP12152, 600 mm, Art.No. TOP12153

Runway recess for turntables including leveling plate and balancing tees, recess adjustable in height, Art.No. TOP12191

Runway recess for sliding plates, Art.No. TOP12192

Sliding plate standard, Art.No. TOP12196

Sliding plate precision, Art.No. TOP12193

Articulation clearance testing device including remote control, Art.No. TOP12136V2

Lighting set LED, Alu Track, Art.No. TOP12167

Installation frame for installation at floor level (except SL440), 4400 mm galvanized, Art.No. TOP12139, 4800 mm galvanized, Art.No. TOP12140

Installation frame for installation at floor level, 4800 mm galvanized, Art.No. TOP12160 5500 mm galvanized, Art.No. TOP12161

Automatic floor level compensation, 2 pieces 4400 mm, Art.No. TOP12143, 2 pieces DUPLO 4400 mm, Art.No. TOP12141, 4 pieces 4800 mm, Art.No. TOP12162

Automatic floor level compensation, 2 pieces 4800 mm, Art.No. TOP12199, 2 pieces DUPLO 4800 mm, Art.No. TOP12142, 4 pieces 5500 mm, Art.No. TOP12163

Detailed information see  
blitzrotary.com

## SL135MP, SL135RA

1-CYLINDER INGROUND LIFTS FROM BLITZROTARY ARE AVAILABLE WITH H CHASSIS AND X CHASSIS. THE H CHASSIS VERSION IS USED PRIMARILY IN THE AREA OF MAINTENANCE; THE X CHASSIS VERSION IS ESPECIALLY SUITABLE FOR BODYWORK. BOTH BOAST THE SAME RUGGED DESIGN AND THE SAME FLAWLESS QUALITY.

Dye cast aluminium balance plates (MP models only), adjustable longitudinally or longitudinally and perpendicular to the direction of approach ensure comfortable and reliable vehicle support. They provide an enormous range of support while occupying a minimum amount of floor space.

260 bar high-pressure hydraulic unit in lower oil design with integrated 3.0 kW motor, valve, and oil fill volume.

Hydraulic, hard chrome plated safety guards to protect against unwanted sinking down.

Short assembly times thanks to lift unit preassembled in the factory with 9 m long cable set.

In combination with a freely moveable rubber bases, this lift is the preferred choice when there is limited free space below floor level, for side cladding that reach far down, and for pick up points located further under the vehicle.

Foil keyboard for raising and lowering with tactile feedback and visual error display plus lockable power switch – incl. emergency air release on the control section.

Maximum corrosion protection by cathodoresis + powder coating

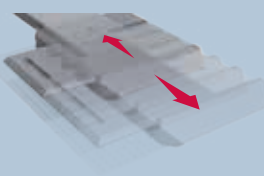
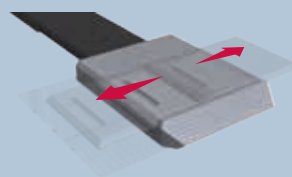
Guide belts protect the hydraulic seal against forces acting laterally. The hydraulics are permanently protected inside the installation cassette.

Quality comes first – we guarantee the seal of the cylinders for 5 years.

### MODELS

#### SL135MP

1-cylinder inground lift with galvanised H chassis, with longitudinally and transversely movable drive-over platforms, mechanical foot guards, and rubber bases 70 mm.

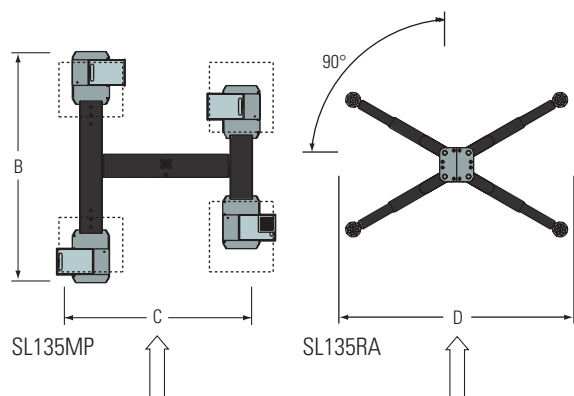


#### SL135RA

1-cylinder inground lift with galvanised X chassis and 2-part supporting arms incl. support plates.



Model:	SL135MP XY support	SL135RA Supporting arms, 2-part
Capacity	3500 kg	3500 kg
Stroke	1860 mm	1895 mm
B. Overall length	890-2051 mm	-
C. Overall width	1665-1945 mm	-
Drive over height	60 mm	114 mm
Rotary plate height min.	-	95 mm
Rotary plate height max.	-	130 mm
Support range, longitude	860-1860 mm	-
Support range, transverse	770-1900 mm	-
D. Support range	-	1440-2200 mm
Supporting arm length min.	-	615 mm
Supporting arm length max.	-	950 mm
Cylinder diameter	123 mm	123 mm
Installation depth	2383 mm	2383 mm
Motor performance	3,0 kW	3,0 kW
Electrical connection (3 phases)	230/400 V, 50 Hz	230/400 V, 50 Hz
Lifting time	45 sec.	45 sec.
Lowering time	40 sec.	40 sec.



Detailed information see  
blitzrotary.com

## ACCESSORIES

Rubber bases pyramid 70 mm,  
4 pieces, Art.No. TOP11005

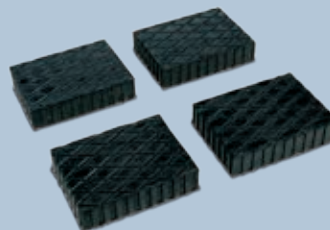
2nd control unit, Art.No. TOP12137



Rubber bases pyramid 1400 mm,  
4 pieces, Art.No. TOP11035

Rubber bases pyramid, 4 pieces,  
height 70 mm Art. Nr. TOP11005/ 140  
mm Art.No. TOP11035

Rubber bases, 120 x 120 x 40 mm,  
4 pieces, Art.No. TOP11006

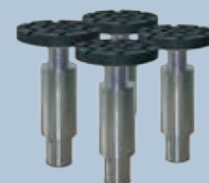


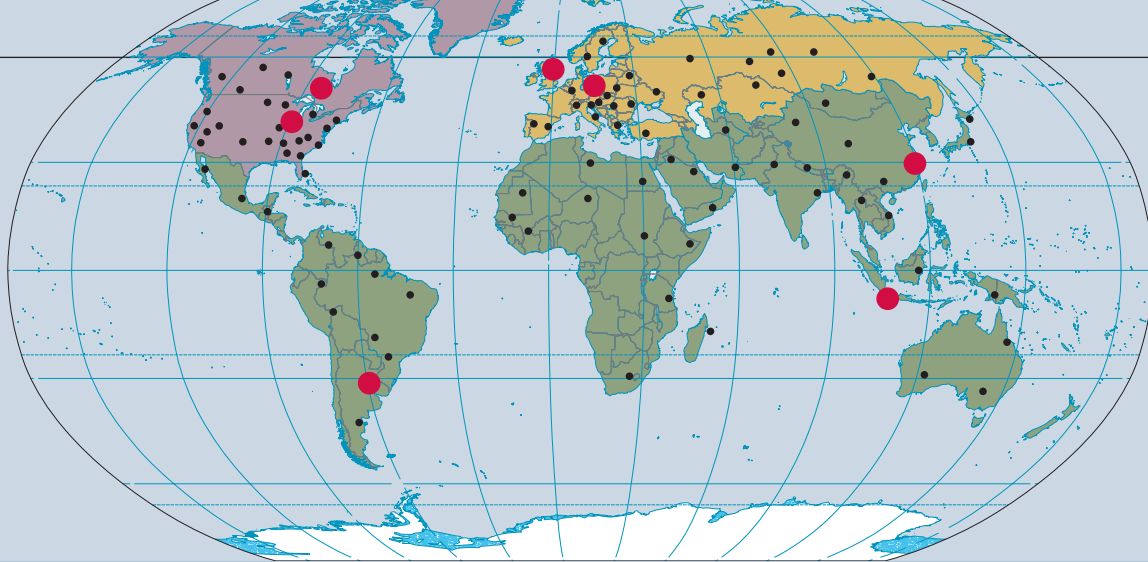
Adapter kit for sports car, 4 pieces,  
height 30-60 mm, Art.No. TOP11021



Rubber bases, 290 x 335 x 20 mm,  
4 pieces, Art.No. TOP11007

Adapter kit for sports car, 4 pieces,  
height 102-141 / 128-198 / 198-300  
mm





## LOOK LOCAL - ACT GLOBAL

WE ACT WITH FOCUS ON OUR CUSTOMERS AND THEIR REQUIREMENTS. LOCAL SUBSIDIARIES WORLDWIDE PERMIT US TO DO SO, AND AT THE SAME TIME, OFFER A HIGH DEGREE OF PRODUCT FLEXIBILITY.

Rotary Lift's story of success started in 1924. Inspired by a barber chair rising in the air, company founder Peter Lunati developed the world's first vehicle lift. The lift could rotate. This design made it possible for vehicles to drive on and off the lift in forward gear. An important argument considering the frequent problem of reversing at that time. The patent for the lift was granted on September 1, 1925 and Rotary Lift – the company – was born.

Over 75 years later, Rotary Lift has grown to become the world leader in vehicle lift productivity. Apart from the headquarters in Madison, Indiana (USA) and the European Control Center in Bräunlingen, Germany, numerous global subsidiaries attend to the desires and requirements of our customers.

With this unique network, Rotary Lift has the opportunity of analyzing and recognizing market trends at an early stage and of applying that knowledge to generate global standards. Worldwide product releases of numerous vehicle manufacturers emphasize this approach.



**Headquarter**  
Madison, IN USA

**European Control Center**  
Bräunlingen, Germany

**Rotatable**  
One of the first lifts of Rotary Lift



BlitzRotary GmbH  
Hüfanger Straße 55  
D-78199 Bräunlingen  
A **DOVER** COMPANY

Fon +49.771.9233.0  
Fax +49.771.9233.99  
info@blitzrotary.com  
www.blitzrotary.com

USA: +1.812.273.1622 (Headquarter)  
Canada: +1.905.812.9920  
United Kingdom: +44.178.747.7711  
AustralAsia: +60.3.7660.0285

Latin America/Caribbean: +1.812.273.1622  
Middle East/Northern Africa: +49.771.9233.0  
Southern Africa: 1.812.273.1622  
Brazil: +55.11.4534.1995

